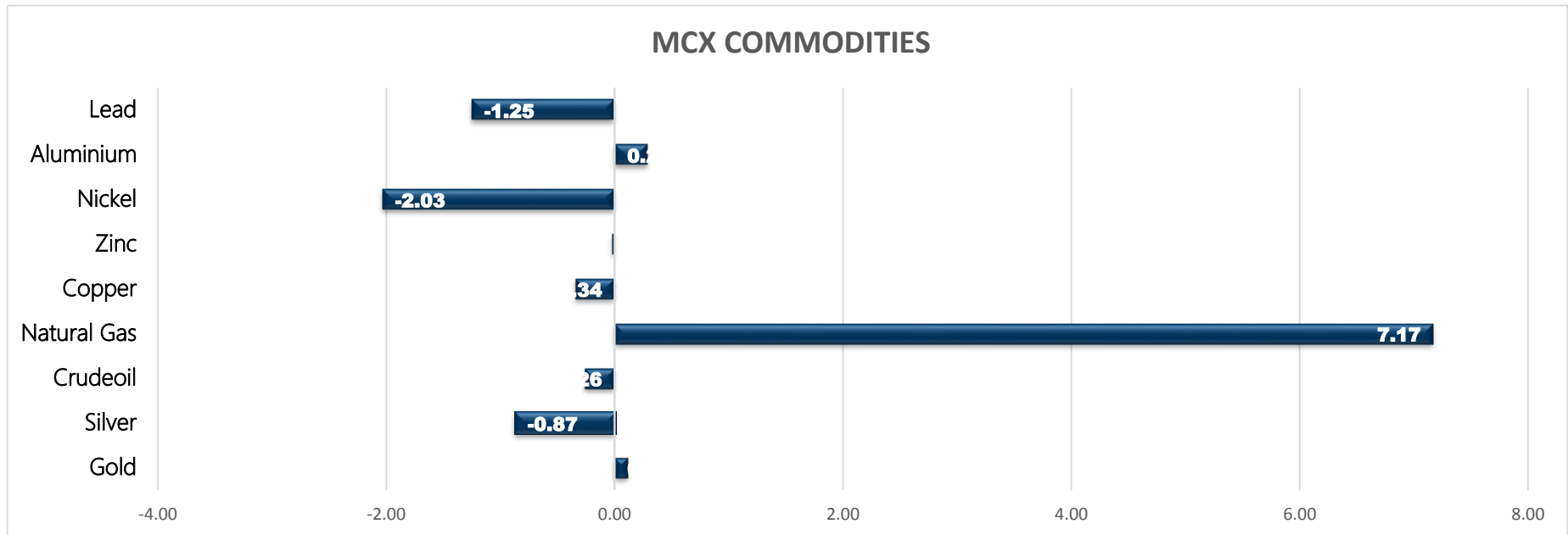


Commodity	Closed	% Change	Commodity	Ltp*	% Change	Economical Data
Gold	47237.00	0.12	Gold\$	1797.10	0.30	EUR German Import Prices m/m
Silver	62723.00	-0.87	Silver\$	23.64	0.42	USD Core PCE Price Index m/m
Crudeoil	5044.00	-0.26	Crudeoil\$	67.42	-1.38	USD Goods Trade Balance
Natural Gas	312.50	7.17	Natural Gas\$	4.18	7.36	USD Personal Income m/m
Copper	714.10	-0.34	Lme Copper	9325.50	0.28	USD Personal Spending m/m
Zinc	246.70	-0.02	Lme Zinc	2991.00	-0.23	USD Prelim Wholesale Inventories m/m
Nickel	1410.70	-2.03	Lme Nickel	18680.00	-0.66	USD Fed Chair Powell Speaks
Aluminium	209.00	0.29	Lme Lead	2292.50	0.07	USD Revised UoM Consumer Sentiment
Lead	177.05	-1.25	Lme Aluminium	2628.50	0.32	USD Revised UoM Inflation Expectations



MCX MARKET SYNOPSIS

Contract	Open	High	Low	Close	Rs Chg	% Chg	Volume	OI	OI % Chg
Gold Oct	47181.00	47380.00	46934.00	47237.00	58.00	0.12	6287	11391	-1.72
Gold Dec	47365.00	47522.00	47100.00	47407.00	52.00	0.11	302	2776	4.87

Contract	Open	High	Low	Close	Rs Chg	% Chg	Volume	OI	OI % Chg
Silver Sep	63021.00	63289.00	62397.00	62723.00	-549.00	-0.87	10369	5319	-6.67
Silver Dec	63753.00	63952.00	63075.00	63283.00	-673.00	-1.05	5294	7638	25.65

MCX PIVOT

Contract	Sup - 3	Sup - 2	Sup - 1	Pivot	Res - 1	Res - 2	Res - 3	OI Status
Gold Oct	46542.00	46738.00	46988.00	47184.00	47434.00	47630.00	47880.00	Short Covering
Silver Sep	61425.00	61911.00	62317.00	62803.00	63209.00	63695.00	64101.00	Long Liquidation

SPREAD SYNOPSIS

Gold					Silver					Spread History			
Month	Rate	Oct	Dec	Feb	Month	Rate	Sep	Dec	Mar	Commodity	Max	Min	Avg
Oct	47237		170.00	351.00	Sep	62723		560.00	1696.00	Gold	585.00	-358.00	186.00
Dec	47407			181.00	Dec	63283			1136.00	Silver	2862.00	588.00	1297.00
Feb	47588				Mar	64419							

INTERNATIONAL MARKET SYNOPSIS

Gold Last 4 Day Movement							Pivot		
Date	Open	High	Low	Close	Chg	% Chg	Res - 1	Res - 2	Res - 3
26-Aug-21	1790.13	1796.37	1781.85	1791.58	1.49	0.08%	1798.02	1804.45	1812.54
25-Aug-21	1802.84	1802.85	1784.33	1790.09	-12.75	-0.71%	Sup - 1	Sup - 2	Sup - 3
24-Aug-21	1805.12	1808.37	1800.82	1802.84	-2.26	-0.13%	1783.50	1775.41	1768.98
23-Aug-21	1780.60	1805.11	1777.00	1805.10	24.45	1.37%			

Silver Last 4 Day Movement							Pivot		
Date	Open	High	Low	Close	Chg	% Chg	Res - 1	Res - 2	Res - 3
26-Aug-21	23.827	23.853	23.454	23.538	-0.289	-1.21%	23.78	24.01	24.18
25-Aug-21	23.850	23.866	23.649	23.827	-0.023	-0.10%	Sup - 1	Sup - 2	Sup - 3
24-Aug-21	23.619	23.929	23.536	23.850	0.231	0.98%	23.38	23.22	22.98
23-Aug-21	23.008	23.663	22.973	23.619	0.611	2.66%			

GOLD

Gold trading range for the day is 46738-47630.

Gold steadied as Fed's Chair Powell's highly anticipated speech will likely offer few new hints about when the Fed may start reducing its massive asset purchases.

New orders for key U.S.-made capital goods were unexpectedly flat in July amid supply constraints and a shift in demand to services

China's net gold imports via Hong Kong fall 28.6% in July

Data showed U.S. business activity growth slowed in August, while Asia's robust economic recovery from last year lost steam.



SILVER

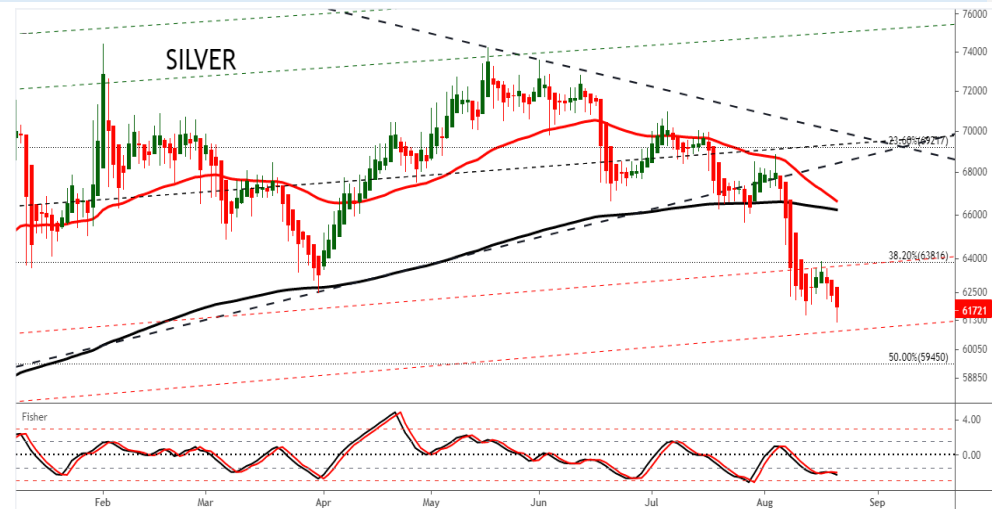
Silver trading range for the day is 61911-63695.

Silver dropped after a regional Federal Reserve president suggested a faster pace of reducing the U.S. central bank's asset purchases

Bullard said in comments that he was skeptical that inflation would moderate and for that reason the Fed needed to start tapering its bond-purchasing program.

The U.S. economy grew a bit faster than initially thought in the second quarter, lifting the level of gross domestic product above its pre-pandemic peak

First-time claims for U.S. unemployment benefits edged slightly higher in the week ended August 21st.



**BULLION SPOT MARKET SYNOPSIS**

Gold Spot 995		
Exch.	Descr.	Ltp*
CMDTY	Gold 995 - Ahmedabad	48570.00
CMDTY	Gold 995 - Bangalore	48580.00
CMDTY	Gold 995 - Chennai	48630.00
CMDTY	Gold 995 - Cochin	48635.00
CMDTY	Gold 995 - Delhi	48590.00
CMDTY	Gold 995 - Hyderabad	48595.00
CMDTY	Gold 995 - Jaipur	48530.00
CMDTY	Gold 995 - Kolkata	48670.00
CMDTY	Gold 995 - Mumbai	48660.00

\* Rates including GST

Gold Spot 999		
Exch.	Descr.	Ltp*
CMDTY	Gold 999 - Ahmedabad	48700.00
CMDTY	Gold 999 - Bangalore	48730.00
CMDTY	Gold 999 - Chennai	48780.00
CMDTY	Gold 999 - Cochin	48785.00
CMDTY	Gold 999 - Delhi	48740.00
CMDTY	Gold 999 - Hyderabad	48650.00
CMDTY	Gold 999 - Jaipur	48650.00
CMDTY	Gold 999 - Mumbai	48810.00

\* Rates including GST

Silver Spot 999		
Exch.	Descr.	Ltp*
CMDTY	Silver 999 - Ahmedabad	65060.00
CMDTY	Silver 999 - Bangalore	65170.00
CMDTY	Silver 999 - Chennai	65060.00
CMDTY	Silver 999 - Delhi	65160.00
CMDTY	Silver 999 - Hyderabad	65230.00
CMDTY	Silver 999 - Jaipur	65010.00
CMDTY	Silver 999 - Kolkata	65330.00
CMDTY	Silver 999 - Mumbai	65245.00

\* Rates including GST

Gold and Silver Fix		
Exch.	Descr.	Ltp*
CMDTY	Gold London AM FIX	1794.70
CMDTY	Gold London PM FIX	1788.70
CMDTY	Silver London FIX	23.76

Gold and Silver Ratio		
Exch.	Descr.	Ltp*
Intl Spot	GOLD SILVER RATIO	76.03
MCX	GOLD SILVER RATIO	75.31

Bullion Futures on DGCX		
Exch.	Descr.	Ltp*
DGCX	GOLD 28SEP2021	1785.90
DGCX	GOLD 26NOV2021	1794.90
DGCX	GOLD QUANTO 24SEP2021	50073.00
DGCX	GOLD QUANTO 25NOV2021	50073.00
DGCX	SILVER 27AUG2021	23.66
DGCX	SILVER 26NOV2021	23.60

SPOT Vs MCX SPREAD			
Silver 999	Spread	Gold 999	Spread
Ahmedabad - Mcx Silver	2337.00	Ahmedabad - Mcx Gold	1463.00
Bangalore - Mcx Silver	2447.00	Bangalore - Mcx Gold	1493.00
Chennai - Mcx Silver	2337.00	Chennai - Mcx Gold	1543.00
Delhi - Mcx Silver	2437.00	Cochin - Mcx Gold	1548.00
Hyderabad - Mcx Silver	2507.00	Delhi - Mcx Gold	1503.00
Jaipur - Mcx Silver	2287.00	Hyderabad - Mcx Gold	1413.00
Kolkata - Mcx Silver	2607.00	Jaipur - Mcx Gold	1413.00
Mumbai - Mcx Silver	2522.00	Mumbai - Mcx Gold	1573.00

**GOLD PRICE MOVEMENT SINCE 2012**

Year	JAN	FEB	MAR	APR	MAY	JUN	JUL	AUG	SEP	OCT	NOV	DEC	Growth
2012	28078	27952	28518	29283	29248	29665	29749	31206	31535	31105	31076	30859	3530.00
	2.74	-0.45	2.02	2.68	-0.12	1.43	0.28	4.90	1.05	-1.36	-0.09	-0.70	12.92
2013	29871	29570	29394	26905	26874	25669	28207	35074	29874	29793	29234	28364	-2495.00
	-3.20	-1.01	-0.60	-8.47	-0.12	-4.48	9.89	24.35	-14.83	-0.27	-1.88	-2.98	-8.09
2014	29462	30090	28536	28887	26863	27776	27818	27996	26313	25881	25835	26703	-1661.00
	3.87	2.13	-5.16	1.23	-7.01	3.40	0.15	0.64	-6.01	-1.64	-0.18	3.36	-5.86
2015	27895	26477	26204	26716	26860	26471	24813	26682	25856	26499	25069	24931	-1772.00
	4.46	-5.08	-1.03	1.95	0.54	-1.45	-6.26	7.53	-3.10	2.49	-5.40	-0.55	-6.64
2016	26638	29513	28549	30266	28627	31199	31549	30724	30742	29950	28385	27445	2514.00
	6.85	10.79	-3.27	6.01	-5.42	8.98	1.12	-2.61	0.06	-2.58	-5.23	-3.31	10.08
2017	28942	29566	28463	28873	28843	28439	28557	29745	29557	29253	29012	29000	1555.00
	5.45	2.16	-3.73	1.44	-0.10	-1.40	0.41	4.16	-0.63	-1.03	-0.82	-0.04	5.67
2018	30117	30379	30408	31036	30831	30432	29653	30129	30481	31748	30240	31392	2392.00
	3.85	0.87	0.10	2.07	-0.66	-1.29	-2.56	1.61	1.17	4.16	-4.75	3.81	8.25
2019	33096	33286	31998	31756	32266	34206	35420	38805	37323	38578	38031	39208	7816.00
	5.43	0.57	-3.87	-0.76	1.61	6.01	3.55	9.56	-3.82	3.36	-1.42	3.09	24.90
2020	41000	41397	43000	44906	46654	48762	53445	51701	50334	50699	47918	50151	10943.00
	4.57	0.97	3.87	4.43	3.89	4.52	9.60	-3.26	-2.64	0.73	-5.49	4.66	27.91
2021	49096	45736	44935	46737	49349	46839	48001						-2150.00
	-2.10	-6.84	-1.75	4.01	5.59	-5.09	2.48						-4.29
Average	2.09	1.06	-1.45	2.50	0.32	0.90	1.56	6.59	-3.11	1.19	-1.39	0.21	Average

SILVER PRICE MOVEMENT SINCE 2012

Year	JAN	FEB	MAR	APR	MAY	JUN	JUL	AUG	SEP	OCT	NOV	DEC	Growth
2012	56422	57783	56790	56482	54110	51987	53974	58408	62780	59881	61185	57864	6835.00
	10.57	2.41	-1.72	-0.54	-4.20	-3.92	3.82	8.22	7.49	-4.62	2.18	-5.43	13.39
2013	57849	53267	53072	44833	43616	40208	41520	53212	49248	48431	44274	43833	-14031.00
	-0.03	-7.92	-0.37	-15.52	-2.71	-7.81	3.26	28.16	-7.45	-1.66	-8.58	-1.00	-24.25
2014	43309	46362	42805	41329	40851	44114	44399	42255	38516	35797	34527	35990	-7843.00
	-1.20	7.05	-7.67	-3.45	-1.16	7.99	0.65	-4.83	-8.85	-7.06	-3.55	4.24	-17.89
2015	38105	36716	37169	36415	38349	35536	34025	34581	34547	36490	33480	33299	-2691.00
	5.88	-3.65	1.23	-2.03	5.31	-7.34	-4.25	1.63	-0.10	5.62	-8.25	-0.54	-7.48
2016	34750	36081	36751	41566	38400	43467	47480	43988	45726	42402	40089	39485	6186.00
	4.36	3.83	1.86	13.10	-7.62	13.20	9.23	-7.35	3.95	-7.27	-5.45	-1.51	18.58
2017	41921	43247	42326	39503	40096	38344	38645	39798	39457	38818	37532	39000	-485.00
	6.17	3.16	-2.13	-6.67	1.50	-4.37	0.78	2.98	-0.86	-1.62	-3.31	3.91	-1.23
2018	39319	38246	38322	38642	39904	39228	38321	37482	38577	38050	36025	38821	-179.00
	0.82	-2.73	0.20	0.84	3.27	-1.69	-2.31	-2.19	2.92	-1.37	-5.32	7.76	-0.46
2019	40439	39760	37761	37714	36449	37452	41227	46776	44119	46764	44506	46711	7890.00
	4.17	-1.68	-5.03	-0.12	-3.35	2.75	10.08	13.46	-5.68	6.00	-4.83	4.95	20.32
2020	46989	43979	39520	41390	50118	50364	64984	70437	59919	60865	60222	68105	21394.00
	0.60	-6.41	-10.14	4.73	21.09	0.49	29.03	8.39	-14.93	1.58	-1.06	13.09	45.80
2021	69706	67261	63814	68366	71898	69074	67847						-258.00
	2.35	-3.51	-5.12	7.13	5.17	-3.93	-1.78						-0.38
Average	1.95	0.49	-1.01	2.38	0.25	-1.30	5.07	5.94	-3.38	1.14	-2.17	2.26	Average

# GENERAL DISCLAIMERS

KEDIA ADVISORY

This Report is prepared and distributed by Kedia Stocks & Commodities Research Pvt Ltd. for information purposes only. The recommendations, if any, made herein are expression of views and/or opinions and should not be deemed or construed to be neither advice for the purpose of purchase or sale through KSCRPL nor any solicitation or offering of any investment /trading opportunity. These information / opinions / views are not meant to serve as a professional investment guide for the readers. No action is solicited based upon the information provided herein. Recipients of this Report should rely on information/data arising out of their own investigations. Readers are advised to seek independent professional advice and arrive at an informed trading/investment decision before executing any trades or making any investments. This Report has been prepared on the basis of publicly available information, internally developed data and other sources believed by KSCRPL to be reliable. KSCRPL or its directors, employees, affiliates or representatives do not assume any responsibility for, or warrant the accuracy, completeness, adequacy and reliability of such information / opinions / views. While due care has been taken to ensure that the disclosures and opinions given are fair and reasonable, none of the directors, employees, affiliates or representatives of KSCRPL shall be liable for any direct, indirect, special, incidental, consequential, punitive or exemplary damages, including lost profits arising in any way whatsoever from the information / opinions / views contained in this Report. The possession, circulation and/or distribution of this Report may be restricted or regulated in certain jurisdictions by appropriate laws. No action has been or will be taken by KSCRPL in any jurisdiction (other than India), where any action for such purpose(s) is required. Accordingly, this Report shall not be possessed, circulated and/ or distributed in any such country or jurisdiction unless such action is in compliance with all applicable laws and regulations of such country or jurisdiction. KSCRPL requires such recipient to inform himself about and to observe any restrictions at his own expense, without any liability to KSCRPL. Any dispute arising out of this Report shall be subject to the exclusive jurisdiction of the Courts in India.

For more details, please **contact:**

 +91 9323406035 / 9619551022

 [info@kediaadvisory.com](mailto:info@kediaadvisory.com)

 [www.kediaadvisory.com](http://www.kediaadvisory.com)

KEDIA STOCKS & COMMODITIES RESEARCH PVT LTD.  
Mumbai, IN.

SEBI REGISTRATION NUMBER - INH000006156

